



www.eco-slab.com
08000 285 377

Eco-Slab™ Insulated Concrete Formwork System

A fast, cost effective solution for replacing timber & solid, ground floor slabs in housing and commercial projects.

Eco-Slab™ is a key component in the Queens Park conservation area, London, BRE Pilot, 'BREEAM Domestic Refurbishment Standard' project*

Greener

Energy consumption for the Queens Park, Victorian terraced houses has been reduced from:

16,000kwh per annum to 2,000kwh

Eco-Slab™ has a **carbon footprint of only 3.4kgs/m²** and is manufactured in the UK from EPS by Jablite/Styropack

EPS has an **A+ rating in the BRE Green Guide**

Thermal Envelope

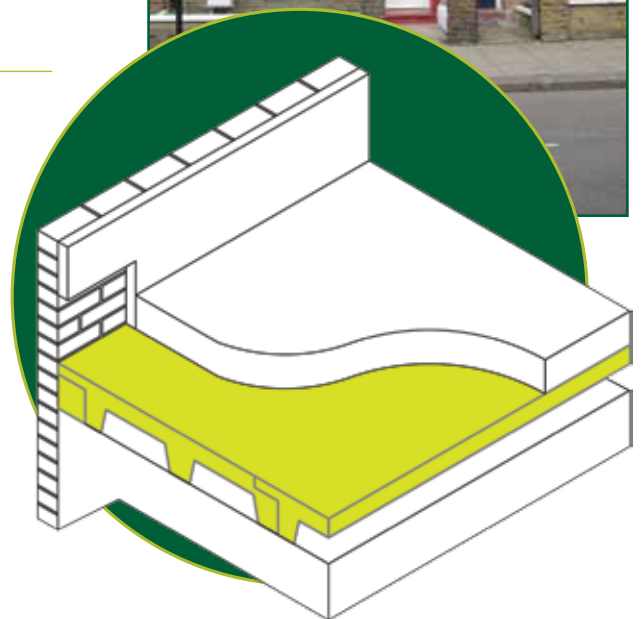
Eco-Slab™ provides the base for a **seamless thermal envelope** with the floor achieving a u/value 0.1 and zero linear thermal leakage at the floor wall interface

Service Ducts

The 100mm legs to the underside of Eco-Slab™ provide **ventilation voids and service ducts**

Fast and Simple

The Eco-Slab™ **lightweight, easy to handle**
Interlocking 1m² panels enable rapid installation and create a stable platform on which to cast the slab



*Architect ECDA - Client City West Homes

For sales and enquiries • 08000 285 377 • info@eco-slab.com

Complies with all
NHBC requirements



Retro Fit Floor Systems



Eco-Slab™ Finished Floors: Zero Lateral Thermal Transmittance - Floor u-values 0.18 to 0.00

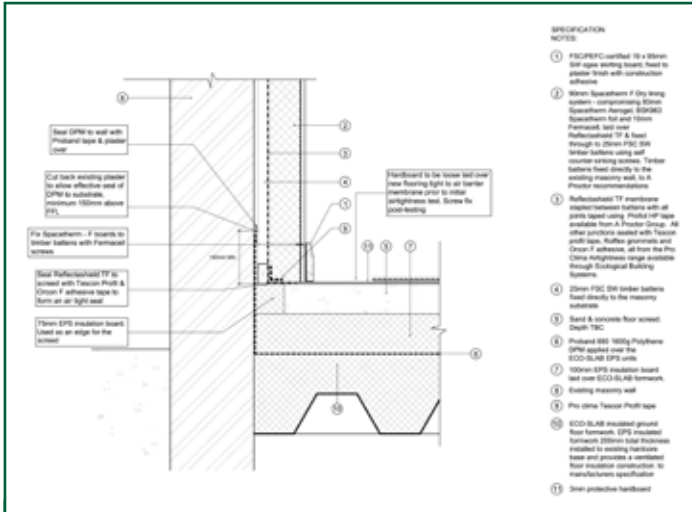


Fig 1: Eco-Slab™ used by ECD Architects: BRE pilot Retro Fit project, Queens Park, conservation area London for City West Homes. Space heating reduced from 16,145kwh to 2,015kwh

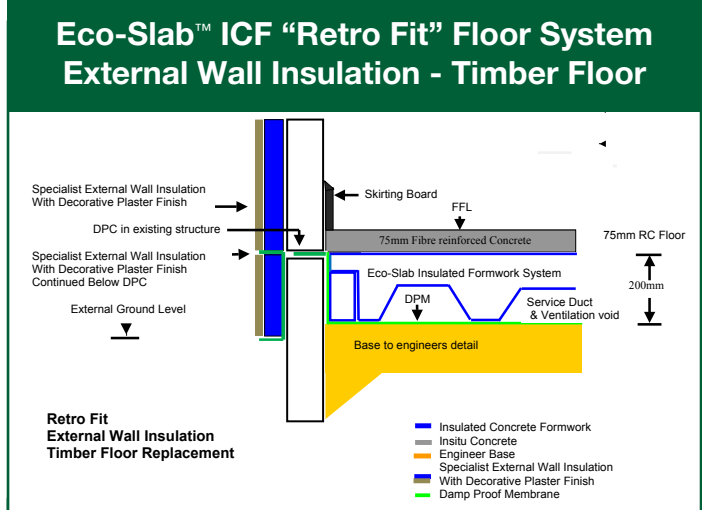


Fig 2: Illustrates how removing an existing timber floor will reveal a void or crawl space. This is filled to engineers detail to leave a regular & even surface for installing the Eco-Slab™ system. (An economical option for this would be foam concrete).

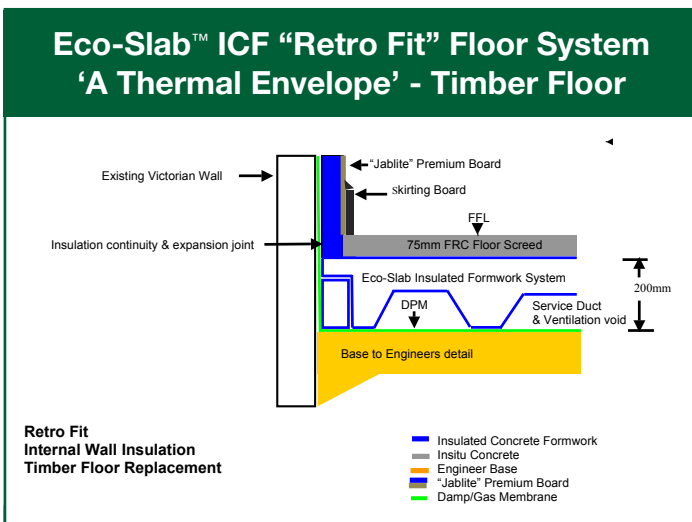


Fig 3: Illustrates how Eco-Slab™ and the wall insulation are contiguous, creating a “Thermal Envelope” with no cold bridging.

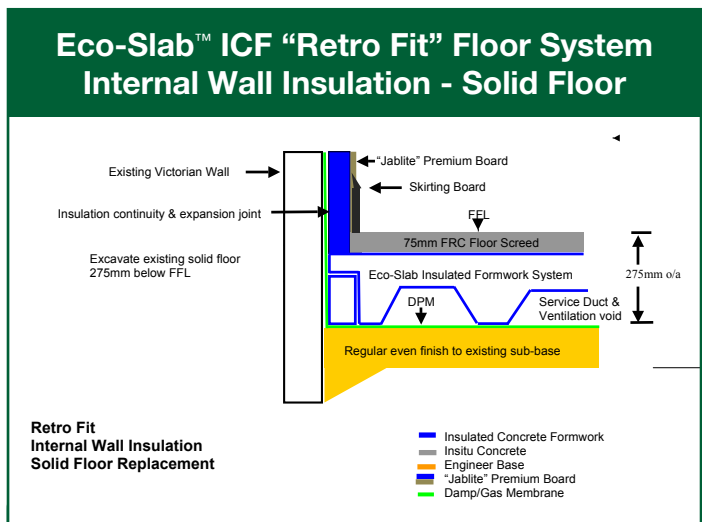


Fig 4: Requires minimum excavation as the overall floor thickness is only 275mm. No further excavation is required as services are housed in the Eco-Slab™ service ducts.

Further information and CADs are available from our web site www.eco-slab.com

For sales and enquiries • 08000 285 377 • info@eco-slab.com